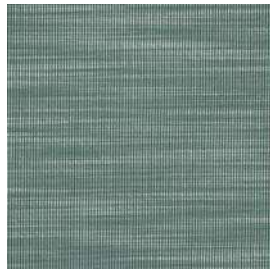


Canvas 2	Cat. C
Divina MD	Cat. C
Divina Melange 3	Cat. C
Fuse	Cat. D
Hallingdal 65	Cat. C
Harald 3	Cat. C
Hero	Cat. B
Merit	Cat. B
Pilot	Cat. E
Raas	Cat. C
Remix 2	Cat. B
Re-wool	Cat. B
Safire	Cat. C
San	Cat. C
Skye	Cat. C
Steelcut Trio 3	Cat. C
Twill Weave	Cat. C
Vidar 3	Cat. C



Hero Col. 991



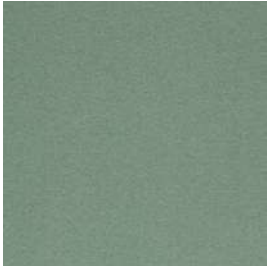
Raas Col. 942



Twill Weave Col. 960



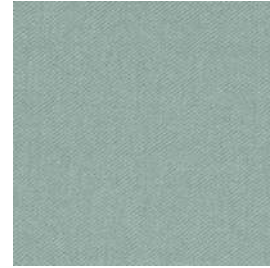
Merit Col. 007



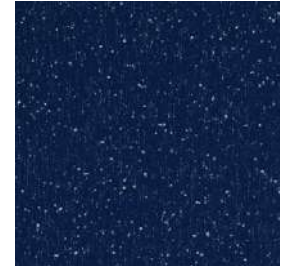
Hero Col. 931



Fuse Col. 981



Twill Weave Col. 940



Pilot Col. 772



Divina Melange 3 Col. 977



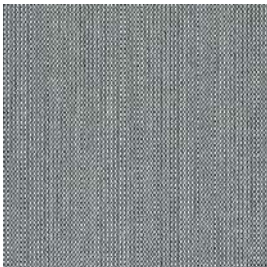
Raas Col. 982



Merit Col. 017



Merit Col. 006



Steelcut Trio 3 Col. 916



Merit Col. 019



Safire Col. 006



Hero Col. 791



Divina Melange 3 Col. 967



Twill Weave Col. 990



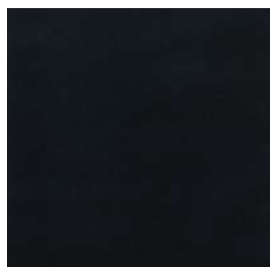
Harald 3 Col. 823



Twill Weave Col. 780



Skye Col. 941



Harald 3 Col. 982



Safire Col. 011



San Col. 790



Hero Col. 711



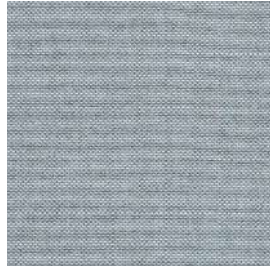
Steelcut Trio 3 Col. 113



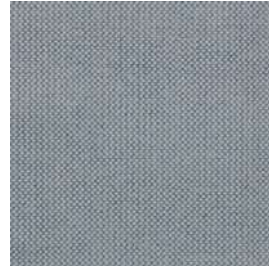
Hallingdal 65 Col. 723



Vidar 3 Col. 554



Re-wool Col. 718



Merit Col. 009



Remix 2 Col. 762



Steelcut Trio 3 Col. 195



Steelcut Trio 3 Col. 713



Canvas 2 Col. 734



Vidar 3 Col. 733



San Col. 190



Merit Col. 011



Merit Col. 012



Divina MD Col. 873



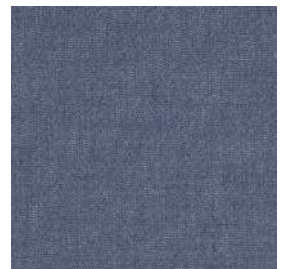
Fuse Col. 191



Remix 2 Col. 733



Re-wool Col. 758



San Col. 780



Safire Col. 012



San Col. 750



Merit Col. 005

Divina MD Designed by Finn Sködt

Application Offices, hotels, institutions, domestic use.

Description 100% new wool. Width app. 59 inches (150 cm). Weight app. 840 g/lin.m. Material dyed. Colour differences will occur.

Abrasion: App. 45,000 rubs acc. to the Martindale method EN ISO 12947.

Lightfastness (ISO) 5-6. **Pilling (EN ISO)** 3. **Fastness to rubbing (ISO)** dry 4-5, wet 4. **Sound absorption (EN ISO 354)** 0.60/Class C (flat), 0.70/Class C (waved).

Airflow 678 Pa s/m. **Flame resistance:** AS/NZS 1530.3. BS 5852 Crib 5. BS 5852 Part 1. EN 1021-1/2. EN 13501, C-s1, d0. IMO FTP Code 2010:Part 8. NF D 60 013. NFPA 260. SN 198 898 5.3 with treatment. UNI 9175 11M. US Cal. Bull. 117-2013. ÖNORM B1 / Q1. (Copy of test report available).

Care Please see www.kvadrat.dk/care-and-maintenance.

Hallingdal 65 Designed by Nanna Ditzel

Application Offices, hotels, institutions, domestic use. Great durability.

Description 70% new wool, 30% viscose. Width 51 inches (130 cm). Weight app. 795 g/lin.m. Material dyed. Foreign fibre may occur in light colours. Colour differences may occur.

Abrasion: App. 100,000 rubs acc. to the Martindale method EN ISO 12947.

Lightfastness (ISO) 5-7. **Pilling (EN ISO)** 3-4. **Fastness to rubbing (ISO)** dry 4-5, wet 3-5. **Sound absorption (EN ISO 354)** 0.45/Class D (flat), 0.70/Class C (waved).

Airflow 210 Pa s/m. **Flame resistance:** AS/NZS 1530.3. AS/NZS 3837. BS 5852 Crib 5. BS 5852 part 1. EN 1021-1/2. GB 50222 B1 with treatment. IMO FTP Code 2010:Part 8. NF D 60 013. NFPA 260. SN 198 898 5.3 with treatment. UNI 9175 11M. US Cal. Bull. 117-2013. ÖNORM B1 / Q1. (Copy of test report available).

Care Please see www.kvadrat.dk/care-and-maintenance.

Pilot Designed by Raf Simons

Application Offices, hotels, institutions, domestic use. Great wearability.

Description 82% new wool, worsted. 10% polyester. 8% nylon. Width 55 inches (140 cm). Weight app. 770 g/lin.m. Yarn dyed. Colour differences may occur.

Abrasion: App. 70,000 rubs acc. to the Martindale method EN ISO 12947.

Lightfastness (ISO) 7. **Pilling (EN ISO)** 4. **Fastness to rubbing (ISO)** dry 4-5, wet 3-5. **Flame resistance:** BS 5852 Crib 5 with treatment. BS 5852 part 1. DIN 4102 B2. EN 1021-1/2. IMO FTP Code 2010:Part 8. UNI 9175 11M. US Cal. Bull. 117-2013. ÖNORM B1 / Q1. (Copy of test report available).

Care Please see www.kvadrat.dk/care-and-maintenance.

Canvas 2 Designed by Giulio Ridolfo

Please see description on [Black/White Card](#)

Harald 3 Designed by Raf Simons and Fanny Aronsen

Please see description on [Black/White Card](#)

Raas Designed by Doshi Levien

Please see description on [Black/White Card](#)

Re-wool Designed by Margrethe Odgaard

Please see description on [Black/White Card](#)

San Designed by Louise Sigvardt

Please see description on [Black/White Card](#)

Twill Weave Designed by Jonathan Olivares

Please see description on [Black/White Card](#)

Divina Melange 3 Designed by Finn Sködt

Application Offices, hotels, institutions, domestic use.

Description 100% new wool. Width app. 59 inches (150 cm). Weight app. 840 g/lin.m. Piece dyed. Colour differences may occur.

Abrasion: App. 45,000 rubs acc. to the Martindale method EN ISO 12947.

Lightfastness (ISO) 5-7. **Pilling (EN ISO)** 3. **Fastness to rubbing (ISO)** dry 4-5, wet 4. **Sound absorption (EN ISO 354)** 0.60/Class C (flat), 0.70/Class C (waved).

Airflow 678 Pa s/m. **Flame resistance:** AS/NZS 1530.3. BS 5852 Crib 5. BS 5852 ignition source 3. BS 5852 Part 1. BS 5867 Part 2 Type B. EN 1021-1/2. EN 13501, C-s1, d0. IMO FTP Code 2010:Part 8. NF D 60 013. NFPA 260. SN 198 898 5.3 with treatment. UNI 9175 11M. US Cal. Bull. 117-2013. ÖNORM B1 / Q1. (Copy of test report available).

Care Please see www.kvadrat.dk/care-and-maintenance.

Merit by Maharam Designed by Maharam Design Studio

Application Offices, hotels, institutions, domestic use. Great durability.

Description 76% post-consumer recycled polyester, 24% polyester. Stain resistant (PFOA free). Width app. 54 inches (137 cm). Weight app. 500 g/lin.m. Yarn dyed. Colour differences may occur.

Abrasion: App. 85,000 rubs acc. to the Martindale method EN ISO 12947. App. 100,000 double rubs acc. to Wyzenbeek method. **Lightfastness (ISO)** 6-7. **Pilling (EN ISO)** 4. **Fastness to rubbing (ISO)** dry 4-5, wet 4-5. **Flame resistance:** BS 476 part 7 + 6 with treatment. BS 5852 Crib 5 with treatment. BS 5852 part 1 with treatment. EN 1021-1/2. US Cal. Bull. 117-2013. (Copy of test report available).

Care Please see www.kvadrat.dk/care-and-maintenance.

Skye Designed by Georgina Wright

Application Offices, hotels, institutions, domestic use. Great durability.

Description 90% new wool, worsted, 10% nylon. Width app. 55 inches (140 cm). Weight app. 580 g/lin.m. Yarn dyed. Colour differences may occur.

Abrasion: App. 100,000 rubs acc. to the Martindale method EN ISO 12947.

Lightfastness (ISO) 6. **Pilling (EN ISO)** 4. **Fastness to rubbing (ISO)** dry 4-5, wet 4-5. **Flame resistance:** AS/NZS 3837 Class 2. BS 5852 Crib 5 with treatment. BS 5852 part 1. EN 1021-1/2. IMO FTP Code 2010:Part 8. NF D 60 013. SN 198 898 5.3 with treatment. UNI 9175 11M. US Cal. Bull. 117-2013. (Copy of test report available).

Care Please see www.kvadrat.dk/care-and-maintenance.

Fuse Designed by Raf Simons

Please see description on [Black/White Card](#)

Hero Designed by Patricia Urquiola

Please see description on [Black/White Card](#)

Remix 2 Designed by Giulio Ridolfo

Please see description on [Black/White Card](#)

Safire Designed by Sahco

Please see description on [Black/White Card](#)

Steelcut Trio 3 Designed by Frans Dijkmeijer and Giulio Ridolfo

Please see description on [Black/White Card](#)

Vidar 3 Designed by Raf Simons and Fanny Aronsen

Please see description on [Black/White Card](#)