



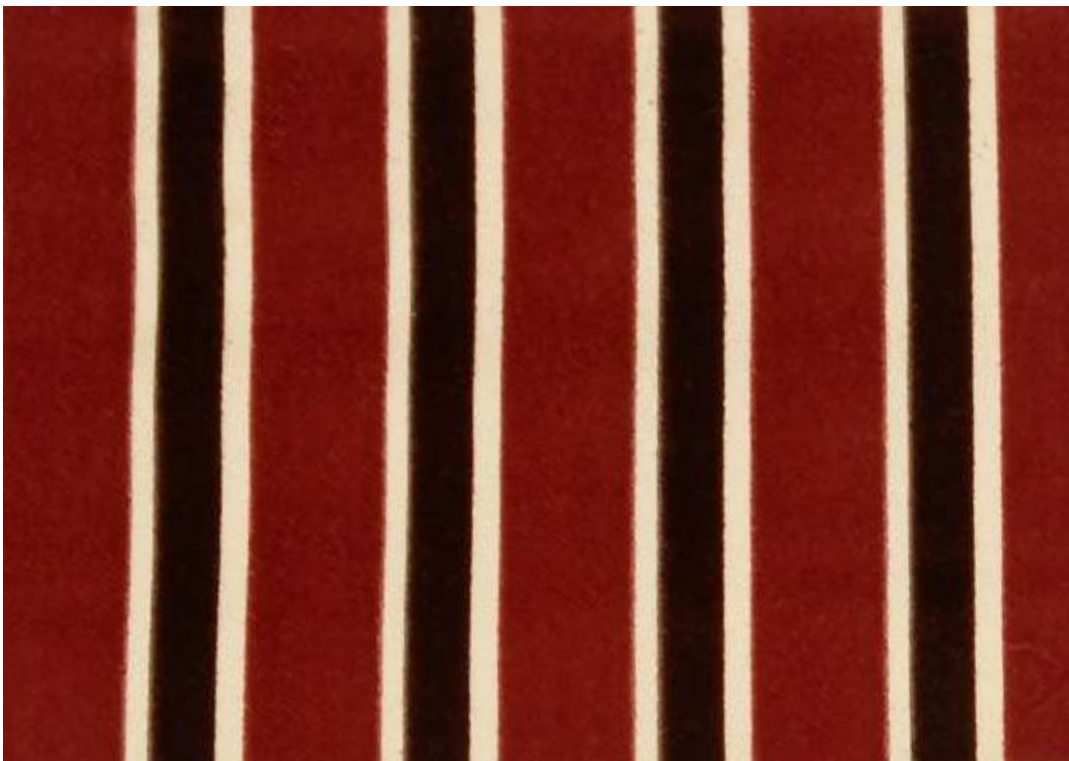
---

L. P.

---



ZELANDER CHECK COL 205 ENGLISH RED

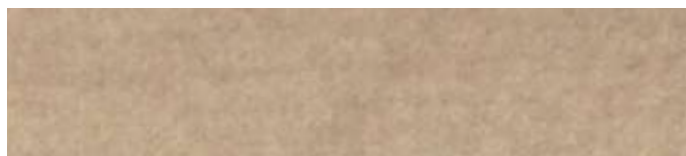


FOSCARI COL 1 PIMENT DOUX

SHERPAS UNITO COL 18 CORALLO



LANCELOT COL 13 NATURAL BROWN



ALTAI UNITO COL 14 SHADED BROWN



DINGLE COL 2 ECRU



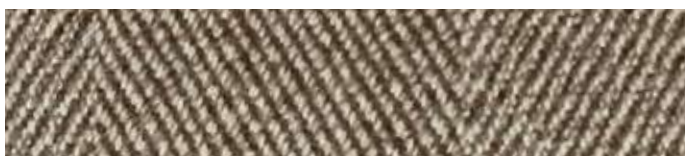
ALTAI MELANGE COL 2 NATURAL BROWN



ALTAI UNITO COL 38 HENNE



PECORA NERA COL 1 NATURAL BROWN



CONNEMARA COL 12 SASSICAIA



LANCELOT COL 16 AMARANTO



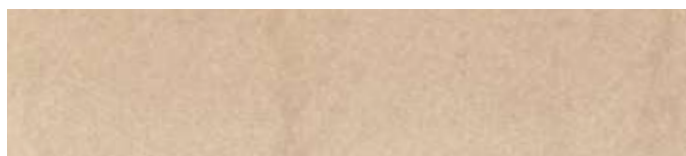
SHERPAS UNITO COL 21 AUBERGINE



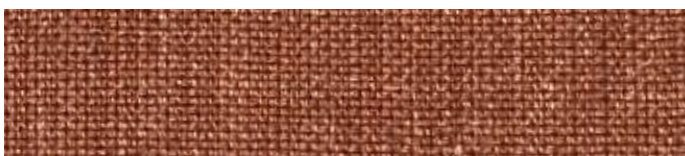
CONNEMARA COL 14 COWES



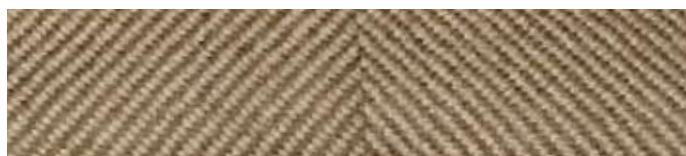
ALTAI UNITO COL 27 VICUNA CHEST



CLIFFDEN COL 8 COPPER



ZELANDER TWILL COL 102 SITATUNGA



Codice articolo	Nome	Altezza	Peso	Composizione	Martindale	Caratteristiche tecniche e lavabilità				
A3668RS	ALTAI MELANGE	150 CM	570 GR/MTL	90%WV 10%WS	25.000					
A4668RS	ALTAI UNITO	150 CM	610 GR/MTL	90%WV 10%WS	25.000					
AL2006	CLIFFDEN	140 CM	602 GR/MTL	100%LI	19.000					
AL2008	CONNEMARA	140 CM	1050 GR/MTL	100%LI	25.000					
AL2009	DINGLE	140 CM	973 GR/MTL	100%LI	30.000					
A9442RS	LANCELOT	150 CM	530 GR/MTL	100%WV	10.000					
A6448RS	PECORA NERA	150 CM	755 GR/MTL	100%WV	18.600					
A4699RS	SHERPAS MELANGE	150 CM	480 GR/MTL	100%WS	8.000					
A3699RS	SHERPAS UNITO	150 CM	480 GR/MTL	100%WS	8.000					
A5824RS	ZELANDER TWILL	150 CM	480 GR/MTL	100%WV	14.300					
A5824BRS	ZELANDER CHECK	150 CM	480 GR/MTL	100%WV	14.300					
AC3019	FOSCARI	148 CM	365 GR/MTL	100%CO	20.000					

### Fabric

ALTAI UNITO e MELANGE  
 CLIFDEN  
 CONNEMARA  
 DINGLE  
 FOSCARI  
 LANCELOT  
 PECORA NERA  
 SHERPAS UNITO e MELANGE  
 ZELANDER TWILL e CHECK

### Cat.

D  
 C  
 C  
 C  
 C  
 D  
 D  
 E  
 D

Gebrüder Thonet Vienna GmbH (GTV)  
 Prinz Eugen Straße 42  
 1040 Wien, (Austria)  
 Offices of the trademarks' licensee  
 Production Furniture International S.p.A  
 Via Foggia, 23/H - 10152 Torino Italy

[www.gebruederthonetvienna.com](http://www.gebruederthonetvienna.com)